

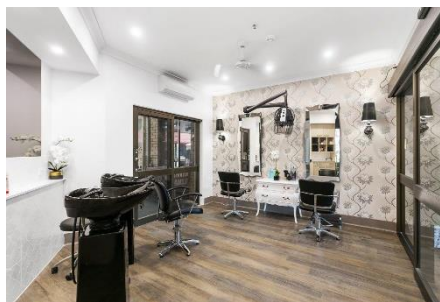
Aged Care Accommodation Fees



Pimpama Aged Care Residence

Centrally located between Brisbane and the Gold Coast, TriCare Pimpama is a well-hidden country secret featuring beautifully landscaped gardens attracting curious native birds, covered walkways, and a specially designed sensory garden. This residence features homely décor and traditional furniture to create a home-style environment.

Valuing the unique characteristics of every individual, we provide care that is specifically designed to match your preferences. Our supportive team of healthcare experts, which includes Registered Nurses, is accessible at all times to ensure you get the assistance you're looking for – whether that's help with day-to-day tasks, precise clinical attention, or a simple, engaging talk.



FEATURES

- Onsite Chef
- Varied Lifestyle Program
- Hair & Beauty Salon
- Centrally located between Brisbane and the Gold Coast

AVAILABLE SERVICES & SUPPORT

- Permanent Aged Care
- Memory Support Care - Secure
- Respite Care – Short Term
- Palliative Care

Our **Classic Accommodations** are traditional in style and décor.

Inclusions: automated bed, overbed table, reverse cycle air-conditioning, ceiling fan, armchair, wardrobe, space for personal small furniture items, wall-mounted TV, emergency call system.

ROOM OPTIONS	MAXIMUM RAD	MAXIMUM DAP	EXAMPLE COMBINATION 50% RAD / 50% DAP
Companion, 20sqm, shared bathroom, option to be within Secure Memory Support Unit	\$375,000	\$85.89	\$187,500 + \$42.95 per day
Single, 9sqm, shared bathroom, option to be within Secure Memory Support Unit	\$400,000	\$91.62	\$200,000 + \$45.81 per day
Single, 18sqm, shared ensuite	\$420,000	\$96.20	\$210,000 + \$48.10 per day
Single, 13sqm, private ensuite	\$450,000	\$103.07	\$225,000 + \$51.53 per day

Pimpama
AGED CARE RESIDENCE

6 Anembo Avenue
Pimpama QLD 4209

P (07) 5549 5800
F (07) 5515 5280

E pimpamaacr@tricare.com.au
W tricare.com.au

ACCOMMODATION PAYMENT OPTIONS

There are three payment options available to fit your budget and circumstances:

- **Refundable Accommodation Deposit (RAD):** a one-off, government-guaranteed, fully refundable lump sum accommodation deposit that may also deliver pension benefits,
- **Daily Accommodation Payment (DAP):** a non-refundable daily accommodation payment,
- **Combination (Combo):** an apportioned combination of the RAD and DAP payment options.

AGED CARE FEES EXPLAINED

<p>BASIC DAILY FEE</p> <p>Applies to: everybody</p> <p>Set by the Australian Government at 85% of the standard aged pension</p>	<p>ACCOMMODATION FEE</p> <p>Applies to: most people</p> <p>Covers the cost of your accommodation</p>	<p>MEANS-TESTED CARE FEE</p> <p>Applies to: some people</p> <p>A capped amount may apply if assets and income fall above the thresholds</p>
--	---	--

*For more information, contact our Client Services Team.

The **Basic Daily Fee** is used to contribute towards your day-to-day living costs, such as meals, electricity, and laundry.

The **Means Tested Care Fee** is an additional contribution towards the cost of care that some people may be required to pay. Services Australia will work out if you are required to pay this fee.

Disclaimer: All rates are calculated using a government-approved rate of 8.36% as of 1st July 2024. Fees and charges are current for the period 1st July 2024 to 30th September 2024. Accommodation pricing is current at the date of publication and is subject to change at any time. The Residence offers Government funded accommodation options. Room dimensions are approximate only and may vary.